

# Pentura - TMS 122

**Industrial Application**  
Page 31

**Retail Application**  
Page 21



## Product description

Functional, energy efficient and economical general purpose Batten for 1xTL5 and 2xTL5 fluorescent lamp with aluminium symmetric reflector for ceiling and wall mounting.

Pentura TMS 122 is a high quality Batten for single and twin TL5 fluorescent lamps. It is integrated with a series of Slim T5 Ballast for varying usages and compactness. A robust energy efficient solution with CRCA sheet steel white powder coated housing and imported anodised glossy reflector find application in wide variety of areas like small office, textile industries, buildings, corridor etc.



With Reflector

Without Reflector

**Features**

- Robust construction with CRCA sheet steel powder coated base plate and cover. Weld-free construction.
- Polycarbonate end caps which support the holder assembly.
- Wide variety of Ballast and lamps combination available for varying application needs.
- Optional imported anodised glossy reflector can be used for effective light distribution.
- Option with high output T5 lamps like TL5 54 Watt for high ceiling areas.

**Applications**

- Small offices
- Conference room-coves
- Shops and hyper markets
- Textile mills
- General industries

**Mounting Type**

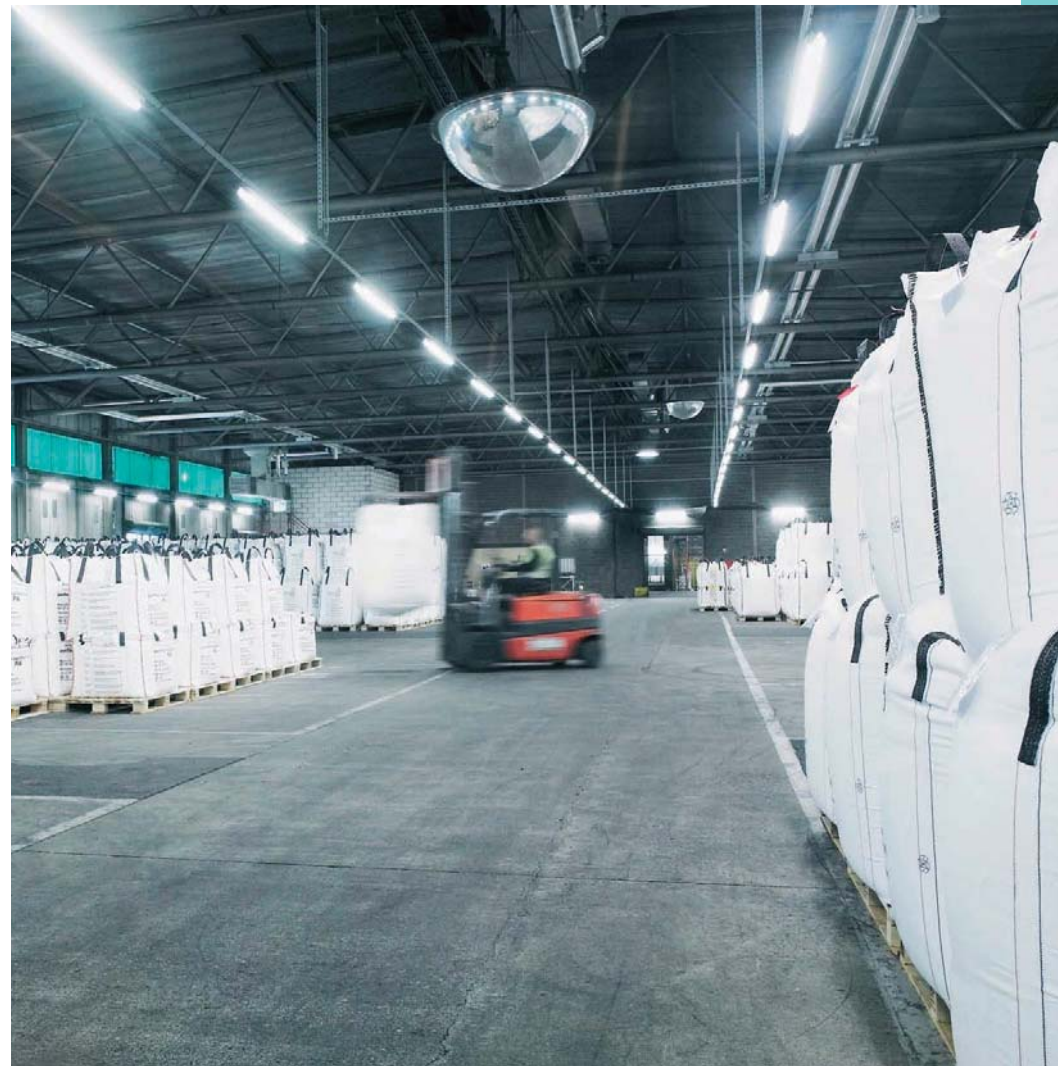
Surface suspended

**Installation**

Electrical connection through cable entry centrally.

**Mounting method**

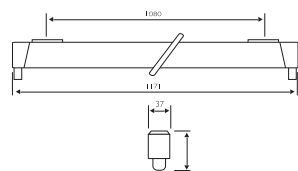
The base plate (with electrical components) is fixed to the ceiling or wall via holes for screws. White Cover is fixed on the base plate with two screws.



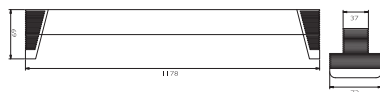
Technical data

Type	For lamp	Nominal voltage (V)	Main current (A)	Nominal power factor
TMSI22 M 1xTL5 28W EBT	1 x TL5 28W	240	0.12	0.98
TMSI22 M 1xTL5-28W EBE	2 x TL5 28W	240	0.23	0.98
TMSI22 M 2xTL5 28W EBT	1 x TL5 28W	240	0.12	0.98
TMSI22 M 2xTL5-28W EBE	2 x TL5 28W	240	0.23	0.98
TMSI22 M 1xTL5 54W EBP	1 x TL5 54W	240	0.24	0.98
TMSI22 M 2xTL5-54W EBP	2 x TL5 54W	240	0.45	0.98

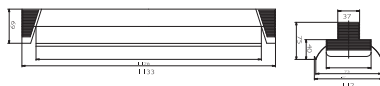
Pentura TMS I22/I28



TMS I22 / 228



TMS I22 / 228 with GMS I22 REFLECTOR



Technical Drawing

Ordering data

Type	Ordering data	Quantity per box	Dimensions (mm)	Net weight (kg)	Gross weight (kg)	Volume (m3)
TMSI22 M 1xTL5 28W EBT	919015810350	6	1240 x 145 x 150	0.84	6.25	0.027
TMSI22 M 1xTL5-28W EBE	919215100085	6	1240 x 145 x 150	0.84	6.25	0.027
TMSI22 M 2xTL5 28W EBT	919015810351	6	1240 x 145 x 150	0.84	6.25	0.027
TMSI22 M 2xTL5-28W EBE	919215100086	6	1240 x 145 x 150	0.84	6.25	0.027
TMSI22 M 1xTL5 54W EBP	919015810349	6	1240 x 145 x 150	0.84	6.25	0.027
TMSI22 M 2xTL5-54W EBP	441536074831	6	1240 x 145 x 150	0.94	7.00	0.027
GMSI22 M I 28 R	919015902703	6	1200 x 120 x 70	0.27	2.00	0.01
GMSI22 M I 2 28 / 54 R	919015902704	6	1200 x 120 x 70	0.27	2.00	0.01

\*This reflector can be used with TMS I22 / 254 luminaire also.